

Applied Technology Services
1210 D Street, Rock Springs, WY 82901 (307)352-7292



Meter Name: SKULL CREEK INLET
Field Name: POWDER WASH
Analyst: CRAWFORD

Meter Loc. #: SCINLET
Cylinder Pres: 0 psig
Line Pres #: 550 psig

Report Date: 03/21/2013 10:44:00
Sample Date(s): 03/21/2013
Flowing Temp: 40° F

Gas Analysis by Chromatograph

NAME	MOLE%	BTU	SG	GPM
Nitrogen	0.5395	0	0.0052	0
Methane	87.4017	884.7995	0.4841	0
CO2	1.6223	0	0.0247	0
Ethane	5.919	104.9909	0.0615	1.5826
H2S	0	0	0	0
Propane	2.8357	71.5141	0.0432	0.781
i-Butane	0.616	20.078	0.0124	0.2015
n-Butane	0.629	20.5673	0.0126	0.1983
i-Pentane	0.2025	8.1206	0.005	0.074
n-Pentane	0.1218	4.8939	0.003	0.0441
Hexanes	0.0727	3.4655	0.0022	0.0299
Heptanes	0.032	1.7649	0.0011	0.0148
Octanes	0.0078	0.4885	0.0003	0.004
Nonanes	0	0	0	0
IDEAL TOTAL:	100.0	1120.6833	0.6553	2.9302

Gross BTU/Real Cu Ft. @ 60 deg F

Pressure =	14.73	14.65	15.025
Dry =	1123.8016	1117.6812	1146.372
Sat. =	1105.5369	1099.4146	1128.1145
Actual =	1123.8016	1117.6812	1146.372
Real S.G. =	0.656813	0.656803	0.65685
Gas Comp. =	0.997225	0.99724	0.99717

Gasoline Content

Pressure =	14.73
Propane GPM =	0.781
Butane GPM =	0.3998
14# Gasoline GPM =	0.1686
26# Gasoline GPM =	0.2391
Total GPM =	2.9302

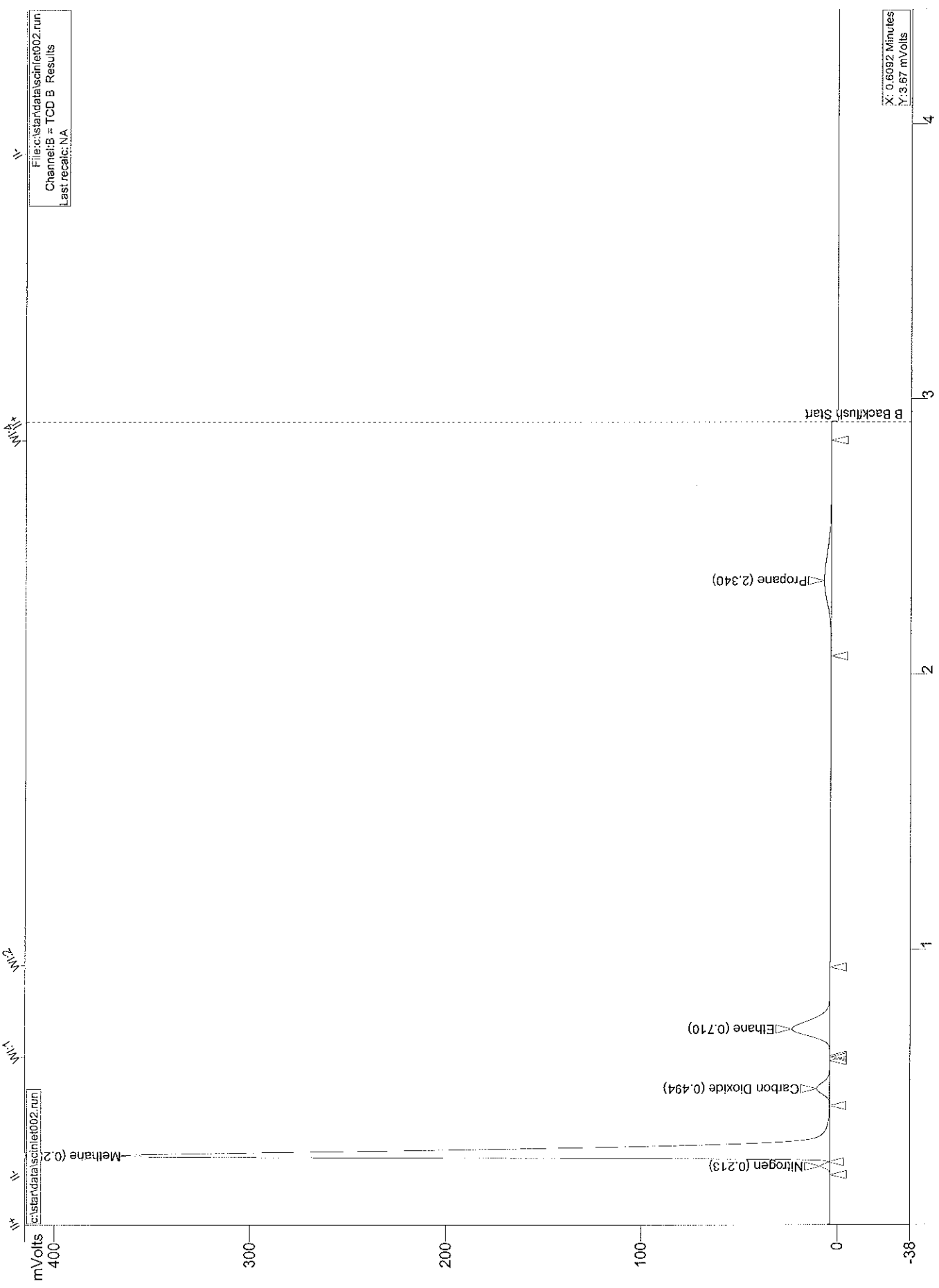
Sulfur Content

Mercaptans ppm = N/A
H2S ppm = N/A

Dewpoints

H2O #/mmcf = N/A
Hydrocarbon °F = N/A
@ psig = N/A

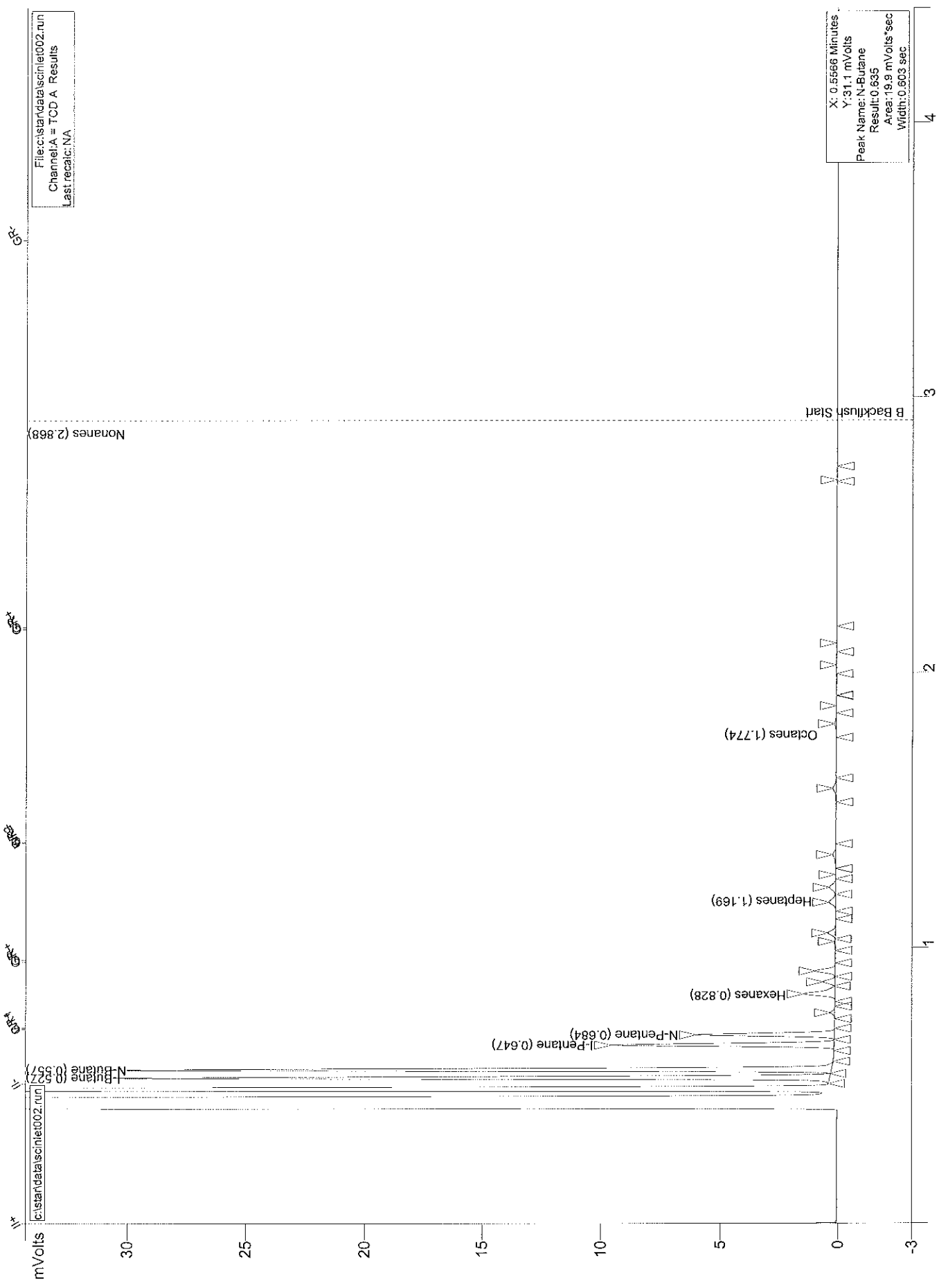
Comments:



File: c:\star\data\scri\ie002.run
 Channel: B = TCD B Results
 Last recal: NA

X: 0.6092 Minutes
 Y: 3.67 mVols

Minutes



Minutes